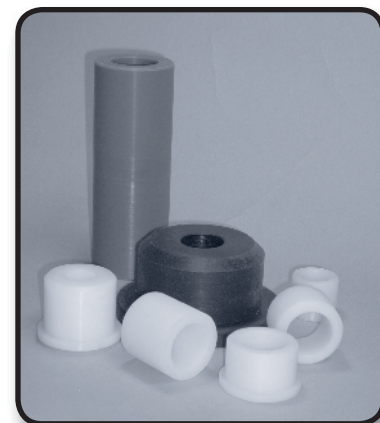


Sleeve & Flange Bearings, Thrust Washers

Slideways Molded Bearings are available in a variety of sizes to fit many applications and operating environments. For special requirements, our machine shop efficiently produces custom sizes from any of these materials:

- UHMW
- MD-Nylon
- Rulon®
- OF/UHMW
- PEEK
- Teflon
- PET

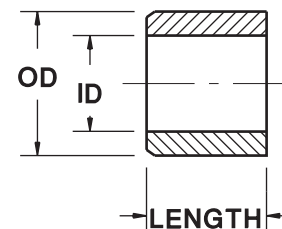
Additional materials are listed on pages 4 and 5.



Sleeve Bearings

MD-Nylon			Nylon		
ID	OD	Length	ID	OD	Length
1/8	1/4	1/8 to 3/8	1/8	1/4	1/4
3/16	1/4	1/4 to 1/2	3/16	5/16	1/4
3/16	5/16	1/8 to 1/2	1/4	3/8	1/4 to 1/2
1/4	5/16	1/4 to 1/2	5/16	7/16	1/2
1/4	3/8	1/8 to 3/4	3/8	1/2	1/4 to 1/2
5/16	3/8	1/4 to 1/2	5/8	13/16	3/4
5/16	7/16	3/16 to 3/4	3/4	1	3/4 to 1
3/8	7/16	1/4 to 1/2	7/8	1-1/8	1
3/4	1/2	3/16 to 1	1	1-1/4	3/4 to 1
7/16	9/16	3/8 to 1/2	1-1/4	1-1/2	1
1/2	5/8	1/4 to 1/2	1-1/2	1-3/4	1 1/2

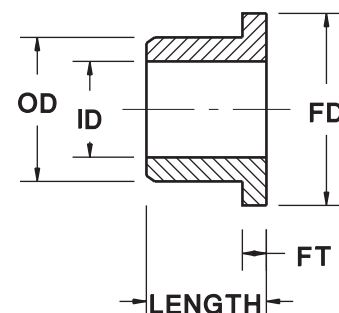
OTHER SIZES AND MATERIALS AVAILABLE



Flange Bearings

MD-Nylon					Nylon				
ID	OD	Length	FD	FT	ID	OD	Length	FD	FT
1/8	1/4	1/8 to 3/8	.360	.047	1/8	1/4	1/8 to 3/8	.36	.047
3/16	1/4	1/4 to 1/2	.375	.032	3/16	1/4	1/4 to 1/2	.375	.032
3/16	5/16	3/16 to 1/2	.370	.047	3/16	5/16	3/16 to 1/2	.370	.047
1/4	3/8	3/16 to 3/4	.560	.047	1/4	3/8	3/16 to 3/4	.560	.047
3/8	1/2	3/8 to 1	.625	.062	3/8	1/2	1/8 to 1	.625	.062
1/2	5/8	1	.875	.062	1/2	5/8	1	.875	.062
5/8	3/4	3/8 to 1 1/2	1	.062	5/8	3/4	3/8 to 1 1/2	1	.062
3/4	1	1/2 to 1 1/2	1.125	.062	3/4	1	1/2 to 1 1/2	1.125	.062
1	1-1/4	1/2 to 1 1/2	1.500	.188	1	1-1/4	1/2 to 1 1/2	1.500	.188

OTHER SIZES AND MATERIALS AVAILABLE



Thrust Washers

Washers are precision machined or stamped and are available in any size and in all plastic materials. When ordering please specify ID, OD, and thickness needed.

