

ANSI Roller Chain Guides

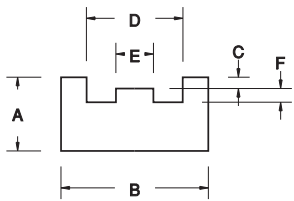
More UHMW Grades

XX	Grade	Attribute*
02	Black Repro	Lower cost
03	Oil-Filled UHMW	Higher speed
25	Green Repro	Matches European guides
23	Static-Dissipative	Conductive
50	HT	Operates to 275°F

All of our Roller Chain Guides and Belt Guides are available in several grades of UHMW. To determine the correct part number, substitute the appropriate UHMW grade number wherever you see "XX" in the tables below.

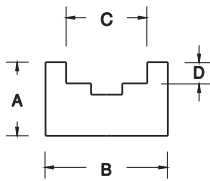
*More details can be found in the UHMW Materials section on page 4.

Type TS



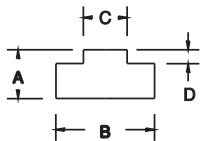
UHMW	More UHMW Grades	ANSI Chain No.	A	B	C	D	E	F
1601111	16XX111	35	0.39	0.79	.03	0.43	.15	.09
1601112	16XX112	40	0.39	0.98	.07	0.61	.25	.09
1601113	16XX113	50	0.59	1.18	.09	0.77	.30	.11
1601114	16XX114	60	0.59	1.38	.11	0.96	.40	.14
1601115	16XX115	80	0.79	1.57	.14	1.23	.50	.19
1601116	16XX116	100	0.98	1.97	.17	1.51	.59	.25
1601117	16XX117	120	1.18	2.36	.20	1.91	.80	.31

Type U



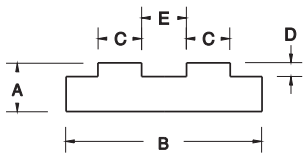
UHMW	More UHMW Grades	ANSI Chain No.	A	B	C	D
1601091	16XX091	35	.59	0.79	0.39	.15
1601092	16XX092	40	.59	0.79	0.51	.18
1601093	16XX093	50	.71	1.10	0.65	.24
1601094	16XX094	60	.71	1.10	0.78	.28
1601095	16XX095	80	.79	1.50	1.04	.30
1601096	16XX096	100	.98	1.57	1.30	.33
1601097	16XX097	120	.98	2.17	1.57	.39

Type T



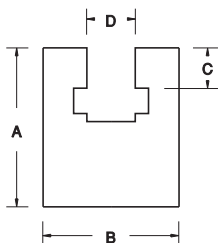
UHMW	More UHMW Grades	ANSI Chain No.	A	B	C	D
1601121	16XX121	35	0.59	0.78	.17	.10
1601122	16XX122	40	0.59	0.78	.29	.10
1601123	16XX123	50	0.59	0.78	.35	.12
1601124	16XX124	60	0.59	1.10	.47	.15
1601125	16XX125	80	0.71	1.34	.60	.18
1601126	16XX126	100	1.00	1.61	.72	.26
1601127	16XX127	120	1.25	2.01	.96	.31

Type TD



UHMW	More UHMW Grades	ANSI Chain No.	A	B	C	D	E
1601131	16XX131	35-2	.59	0.78	.17	.10	.23
1601132	16XX132	40-2	.59	0.85	.29	.10	.27
1601133	16XX133	50-2	.59	1.07	.35	.12	.37
1601134	16XX134	60-2	.59	1.34	.47	.15	.40
1601135	16XX135	80-2	.71	1.75	.60	.18	.55
1601136	16XX136	100-2	.79	2.09	.70	.25	.69
1601137	16XX137	120-2	.79	2.72	.93	.31	.86

Type K



UHMW	More UHMW Grades	ANSI Chain No.	A	B	C	D
1601101	16XX101	35	0.88	0.78	.17	.22
1601102	16XX102	40	1.05	1.10	.29	.33
1601103	16XX103	50	1.43	1.50	.35	.42
1601104	16XX104	60	1.85	1.50	.47	.49
1601105	16XX105	80	1.77	1.57	.60	.66
1601106	16XX106	100	1.97	1.97	.70	.79
1601107	16XX107	120	2.36	2.36	.93	.92