

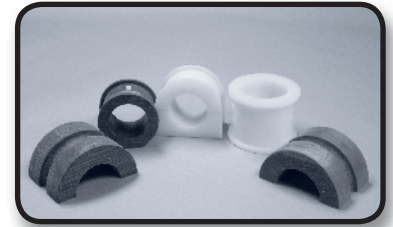
# Screw Conveyor Components

## Hanger Bearings

Slideways manufactures Hanger Bearings in a variety of materials so you can be sure of using the best performing part for your application. The most common styles are shown below. Custom Hanger Bearings can be fabricated in other sizes and materials based on your prints or supplied samples.

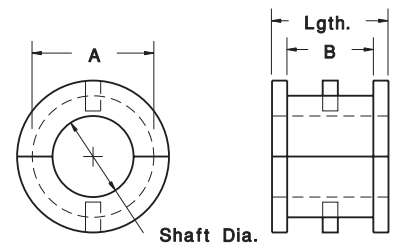
Slideways wood and plastic hanger bearings provide great service life for screw conveyors moving abrasive materials such as grain or wood fibers.

Hangers position the bearings to provide the correct support for the screw shaft.



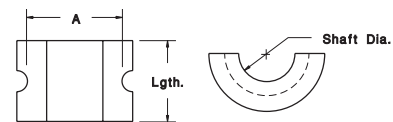
### For Hanger Styles: 220, 226, 20B, 26B, 28B, 326

Wood	UHMW	Nylon	MD-Nylon	Shaft Dia.	A	B	Length
100401	100101	100701	100801	1	1-1/2	1-1/16	1-7/16
100402	100102	100702	100802	1-1/2	2-1/8	1-9/16	1-15/16
100403	100103	100703	100803	2	2-3/4	1-9/16	1-15/16
100404	100104	100704	100804	2-7/16	3-1/4	2-3/8	2-15/16
100405	100105	100705	100805	3	4	2-3/8	2-15/16
100406	100106	100706	100806	3-7/16	4-3/4	3-1/8	3-15/16



### For Hanger Styles: 17, 18B, 19B, 40

Wood	UHMW	Nylon	MD-Nylon	Shaft Dia.	A	Length
100407	100107	100707	100807	1	1-1/2	1-7/16
100408	100108	100708	100808	1-1/2 (6")	2	1-15/16
100409	100109	100709	100809	1-1/2 (9")	2-3/8	1-15/16
100410	100110	100710	100810	2	3	1-15/16
100411	100111	100711	100811	2-7/16	3-11/16	2-15/16
100412	100112	100712	100812	3	4-1/8	2-15/16
100413	100113	100713	100813	3-7/16	4-11/16	3-15/16



### For Hanger Styles: 216, 230, 16B, 216F, 316

Wood	UHMW	Nylon	MD-Nylon	Shaft Dia.	A	B	C	Length
100414	100114	100714	100814	1	1-9/16	1-1/8	1	1-7/16
100415	100115	100715	100815	1-1/2	2-1/4	1-3/8	1-3/8	1-15/16
100416	100116	100716	100816	2	3-1/4	1-5/8	1-5/8	1-15/16
100417	100117	100717	100817	2-7/16	4	1-5/8	2-1/8	2-15/16
100418	100118	100718	100818	3	4-1/2	2-1/8	2-1/4	2-15/16
100419	100119	100719	100819	3-7/16	4-7/8	2-11/16	2-7/16	3-15/16

