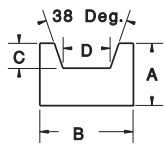


## More UHMW Grades

XX	Grade	Attribute*
02	Black Repro	Lower cost
03	Oil-Filled UHMW	Higher speed
25	Green Repro	Matches European guides
23	Static-Dissipative	Conductive
50	HT	Operates to 275°F

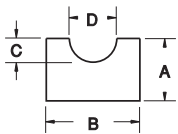
All of our Roller Chain Guides and Belt Guides are available in several grades of UHMW. To determine the correct part number, substitute the appropriate UHMW grade number wherever you see "XX" in the tables below.

\*More details can be found in the UHMW Materials section on page 4.



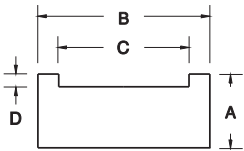
### V-Belt Guides—Plain

UHMW	More UHMW Grades	ANSI Chain No.	A	B	C	D
170101	17XX01	O or 3L	0.38	0.75	0.16	0.28
170102	17XX02	A or 4L	0.50	0.75	0.20	0.38
170103	17XX03	B or 5L	0.63	1.25	0.29	0.47
170104	17XX04	C	0.75	1.38	0.39	0.56



### Round Belt Guides—Plain

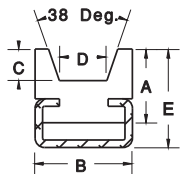
UHMW	More UHMW Grades	ANSI Chain No.	A	B	C	D
170109	17XX09	1/4 DIA	0.38	0.75	0.16	0.31
170110	17XX10	5/16 DIA	0.50	0.75	0.19	0.38
170111	17XX11	3/8 DIA	0.63	1.00	0.22	0.44
170112	17XX12	1/2 DIA	0.75	1.25	0.28	0.56
170113	17XX13	5/8 DIA	1.00	1.25	0.35	0.69



### Flat Belt Guide for Timing Belts

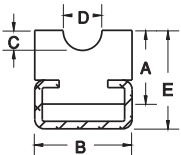
UHMW	More UHMW Grades	Belt Type	pitch x width	A	B	C	D
170131	17XX31	XL	1/5 X 3/8	.40	0.79	0.41	0.06
170132	17XX32	L	3/8 X 1/2	.47	0.79	0.54	0.10
170133	17XX33	L	3/8 X 3/4	.59	1.18	0.79	0.10
		H	1/2 X 3/4				
170134	17XX34	L	3/8" X 1"	.59	1.39	1.04	0.10
		H	1/2" X 1"				
170136	17XX36	H	1/2" X 1 1/2"	.71	1.88	1.59	0.12

STAINLESS AND GALVANIZED MOUNTING CHANNEL ARE SOLD SEPARATELY (SEE PAGE 26).



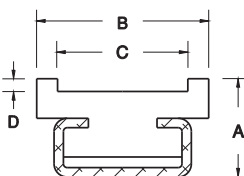
### V-Belt Guides—Mounted

UHMW	More UHMW Grades	ANSI Chain No.	A	B	C	D	E	Channel Size
170105	17XX05	O or 3L	0.59	0.78	0.16	0.28	0.79	C3
170106	17XX06	A or 4L	0.59	0.78	0.20	0.38	0.79	C3
170107	17XX07	B or 5L	0.59	1.10	0.29	0.47	0.79	C5
170108	17XX08	C	0.81	1.10	0.39	0.56	1.04	C5



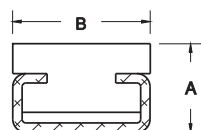
### Round Belt Guides—Mounted

UHMW	More UHMW Grades	ANSI Chain No.	A	B	C	D	E	Channel Size
170114	17XX14	1/4 DIA	0.59	0.78	0.16	0.31	0.79	C3
170115	17XX15	5/16 DIA	0.59	0.78	0.19	0.38	0.79	C3
170116	17XX16	3/8 DIA	0.59	1.10	0.22	0.44	0.79	C5
170117	17XX17	1/2 DIA	0.59	1.10	0.28	0.56	0.79	C5
170118	17XX18	5/8 DIA	0.75	1.10	0.35	0.69	0.94	C5



### Flat Belt Guide Insert for Timing Belts—Mounted

UHMW	More UHMW Grades	Belt Type	pitch x width	A	B	C	D	Channel Size
170141	17XX41	XL	1/5 X 3/8	.63	0.79	0.41	.06	C3
170142	17XX42	L	3/8 X 1/2	.71	0.79	0.54	.10	C3
170143	17XX43	L	3/8 X 3/4	.71	1.18	0.79	.10	C3
		H	1/2 X 3/4					
170144	17XX44	L	3/8" X 1"	.79	1.39	1.04	.10	C5
		H	1/2" X 1"					
170146	17XX46	H	1/2" X 1 1/2"	.95	1.88	1.59	.12	C9



### Insert for Belt Support or Guide Rail—Mounted

UHMW	More UHMW Grades	A	B	Channel Size
170119	17XX19	0.79	0.79	C3
170120	17XX20	0.63	1.10	C5
170121	17XX21	1.16	1.50	C9
170222	17XX22	1.03	1.10	C5